



CBLOC

التجمع الاستشاري





Where Innovation
Meets Purpose.



Established
in 2013



Headquarter
Riyadh, Kingdom of
Saudi Arabia



Experts around
the globe and the
Kingdom

WHO WE ARE

An A-Z multi-discipline engineering and built environment consulting firm with a holistic and collective approach.

C-bloc is a leading engineering and design firm, established in 2013 with a deep commitment to shaping a sustainable and prosperous future.

Headquartered in Riyadh, Kingdom of Saudi Arabia, we offer comprehensive services across various sectors, including building environments, transportation, urban planning, and regulatory expertise.

Our team of passionate and experienced professionals combines cutting-edge expertise with a collaborative approach to deliver innovative and impactful solutions for our clients.

We prioritize sustainable practices in every project, from the initial design to the final implementation, ensuring we make responsible choices that benefit both our clients and the environment.

WHAT WE DO?

We offer comprehensive engineering and design services across various sectors.

including building environments, transportation, urban planning, infrastructure and agriculture.

Our team of passionate and highly-skilled professionals leverages cutting-edge technologies and methodologies, working collaboratively with our clients to ensure every project embodies innovation, sustainability, and exceeds expectations. We understand that our work has the power to influence communities and environments for years to come. That's why we don't just design structures – we shape the future, prioritizing responsible practices for impactful solutions that make a difference.



Mission Statement.

Our mission is to be a top-five local consultant within three years. We're dedicated to leading with excellence, providing innovative solutions, and shaping sustainable futures globally.



Vision Statement.

Our vision is to create enduring value, leaving an indelible positive impact on communities and environments, forging a legacy that resonates across generations

Design & Pre-Design

We collaborate closely with clients to understand their vision and translate it into comprehensive designs.

Our pre-design services include feasibility studies, site assessments, and conceptual design development.



Project Management & Supervision

We offer integrated technical expertise for project supervision and management based on the highest standards. We offer integrated technical expertise for project supervision and management based on the highest standards.

Technical Studies

We provide in-depth technical expertise to analyze every project's unique requirements.

Our Full Package Services includes but not limited to:

Augmented Reality Modelling	Building Sustainability	Environmental Consultancy
BIM	Civil Engineering	Environmental Impact Assessments
Bridges & Road Engineering	Development Planning	Sustainability Evaluation
Structural Engineering	Landscape Architecture	Transport Planning
Geospatial (inc. GIS)	Highway Engineering & Road Safety	Fire & FLS Engineering
Transportation Infrastructure	Visualization	Waste-to-Energy Solutions
MEP Services	BMS & Smart Buildings	Pre-Demolition Audits
Flood Risk Assessment	Urban Planning	Renewable Energy Services

OUR SERVICES

Innovation _ Sustainability _ Expertise

إبتكار _ إستدامة _ خبرات متكاملة

OUR SECTORS



— Our expertise extends across diverse sectors, enabling us to provide comprehensive solutions for the complex challenges of the modern world.

We deliver tailored solutions that meet the evolving needs of our clients and communities.



Infrastructure



Buildings



Urbanization
& Land
Development



Agriculture



Construction
technologies &
Industrialization



Recreation



Environment



Compliance
& Assurance

OUR VALUES

— Our core values serve as the guiding principles for everything we do at C-BLOC. They define who we are, how we work, and the impact we strive to create.



Delivering Exceptional Results

We are dedicated to exceeding client expectations in every project we undertake. Our team of passionate professionals combines cutting-edge expertise with a collaborative approach, ensuring the highest quality standards and achieving the best possible outcomes.

Accountability and Responsibility

We understand the importance of building trust with our clients, partners, and communities. We are committed to accountability and transparency in everything we do, fostering a collaborative environment based on mutual respect and open communication.

Responsible Practices

We are committed to environmental stewardship and sustainable design principles. We integrate these principles throughout every project phase, from initial planning to construction and beyond.

We Embrace Creativity and New Technologies

We believe in the power of creativity and innovation to push boundaries and find new solutions to complex challenges. We encourage our team to think outside the box, constantly seeking ways to improve our processes and deliver exceptional results for our clients.



Our team is united in its commitment to excellence, innovation, and client success. Together, we navigate challenges, inspire creativity, and chart a course for a future where C-BLOC continues to thrive.

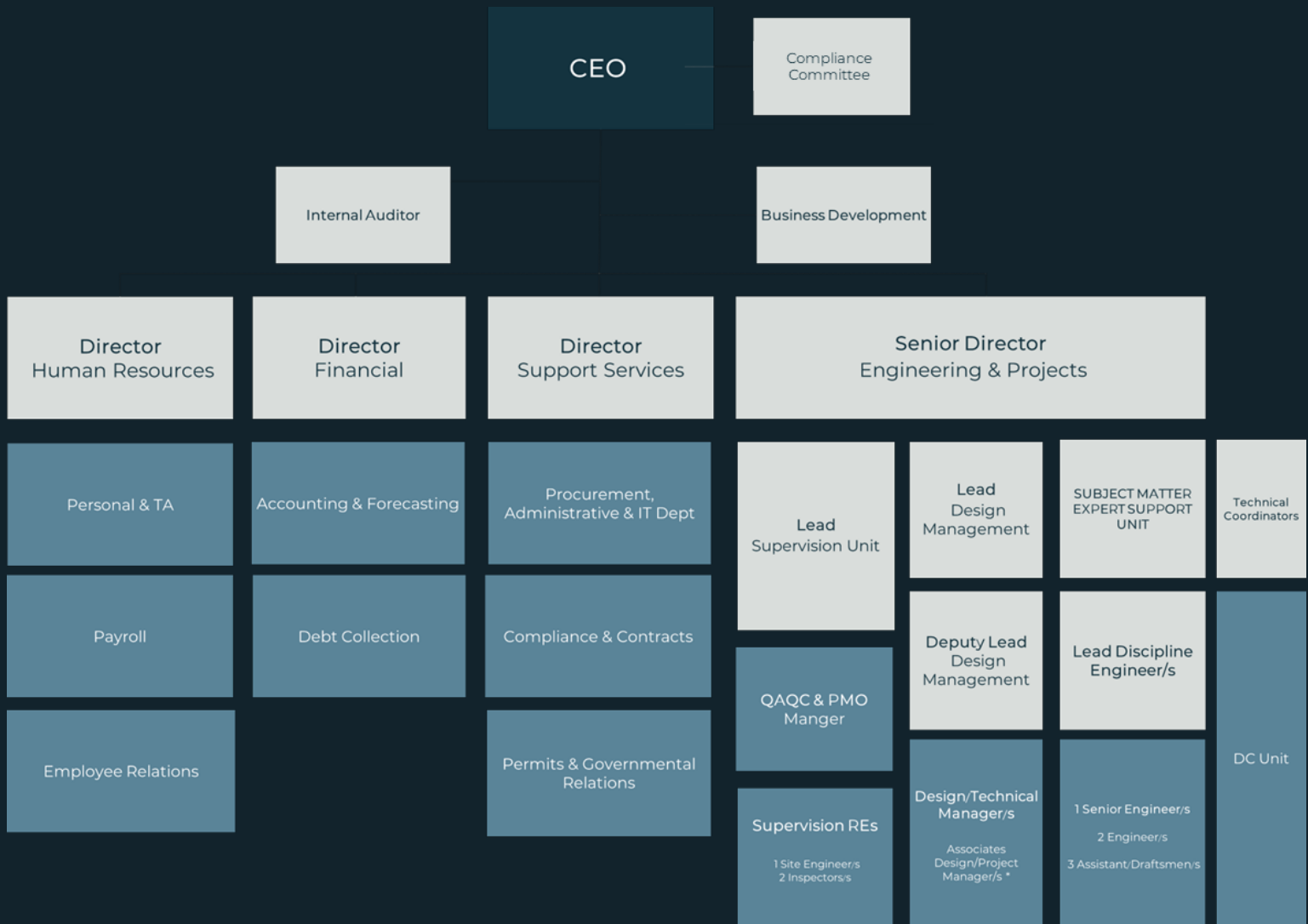
Visionary Leaders

Interconnected Teams
& Experts

350+ Experts around
the kingdom

65+ Experts around
the globe

Company's Organizational Structure



CURRENT

MILESTONES

Ongoing projects around
the kingdom

40+

Experts across the
globe

65 +

On-going projects
total value

30Billion+

Experts across the
kingdom

350+

Local Collaborative
experts

8

International
partners

3

Work METHODOLOGY

We are committed to delivering exceptional results for our clients through a structured and collaborative project management approach, ensuring quality at every step.

Receiving service requests
and collecting information

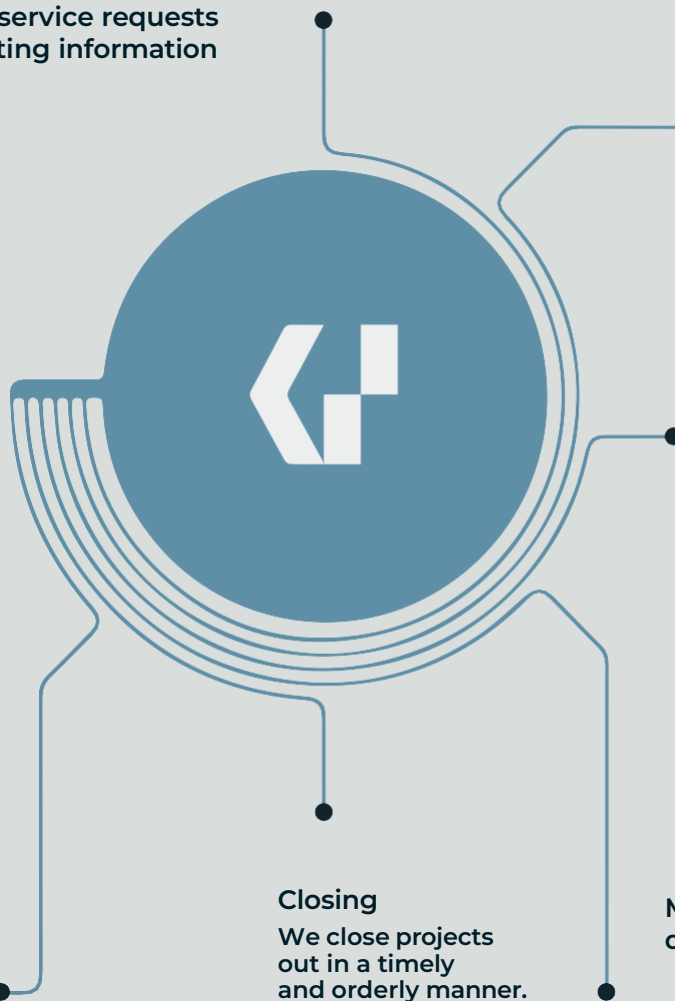
Planning and
administrative
procedures and creating
a timeline

Implementation
We execute projects
efficiently and effectively,
with a focus on quality and
safety.

Closing
We close projects
out in a timely
and orderly manner.

Monitoring and
quality verification

Evaluation and measurement
of customer satisfaction



Every Project is a Testament to Excellence.

C-Bloc's commitment to shaping the
future

Innovation _ Sustainability _ Expertise

إبتكار _ إستدامة _ خبرات متكاملة

OUR SELECTED PROJECTS

Al-Woroud Destination Housing Community

Al-Ahsa

PMC - Technical office



The company provides professional engineering consultancy and project management services, including project planning and control, design review, and technical supervision of construction works. Our scope covers monitoring project progress, reviewing drawings, specifications, and quantities, ensuring compliance with quality, safety, and contractual requirements. We manage coordination between contractors, consultants, and stakeholders, prepare technical reports, schedules, and payment certificates, and support decision-making throughout all project phases. Our services aim to ensure timely delivery, cost efficiency, and high-quality execution in accordance with approved standards and best engineering practices.



T-Court Mixed-Use Building

Apartments & Commercial

Riyadh

Licensing – Studies & Design Full Package – Value Engineering



The company prepared the initial concept for the project in accordance with the owner's requirements, through workshops with the design team at The Sports Boulevard, and prepared the integrated design plans, general site plan, and BOQ for the project.

The project is located on a 10,350 m² plot of land and consists of a ground floor, three upper floors, and two basements. It comprises administrative offices, a medical centre, residential buildings, and a strip mall.



Houbara Production Center

Nature Reserves & Supporting Buildings

Al-Qassim

Surveying – Studies & Design Full Package – Value Engineering & Environment Study

هيئة تطوير محمية الإمام
تركلي بن عبدالله الملكية
Imam Turki bin Abdullah Royal Nature
Reserve Development Authority



The company prepared the initial concept for the project in accordance with the owner's requirements and local and international specifications, in collaboration with an international expert specialising in bustard production centres.

The project is located on a **2 million m²** plot of land in Al-Asiyah Governorate in the Al-Qassim region, within the boundaries of the Imam Turki bin Abdullah Royal Reserve.

The project consists of several buildings and public facilities, such as:

Administrative building - Houbara bustard production centres - Bird hatcheries and nurseries - Veterinary clinic - Mosque - Staff accommodation - Workers' accommodation - Feed production centre - Warehouses - Bird release sites.



North Sustainable Hunting Reserve

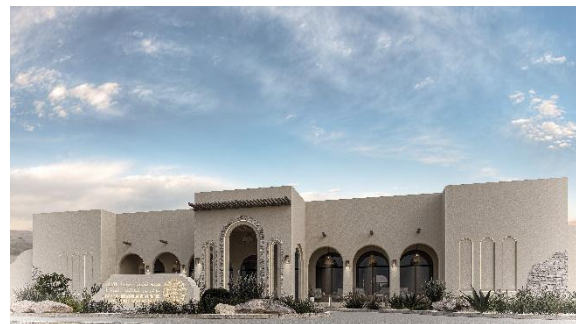
Nature Reserves & Supporting Buildings

Northern Border Design

هيئة تطوير محمية الإمام
تركي بن عبدالله الملكية
Imam Turki bin Abdullah Royal Nature
Reserve Development Authority



The company provides engineering consultancy services for the design of desert camp facilities for a sustainable hunting reserve, including the preparation of architectural, structural, mechanical, electrical, and site development drawings for tents, associated buildings, and the overall master site layout. The scope includes ensuring compliance with applicable codes and environmental requirements, and coordinating with the relevant authorities, ensuring that all approved documents are ready for implementation in accordance with project requirements.



Laheq Island

Housing & Entertainment Community

Laheq Island - Umluj
Supervision – Technical Support



The company provided engineering supervision and project management services for Daniat Al-Mashriqia project in accordance with the requirements of the Red Sea Global (RSG) and the regulations of the Real Estate General Authority (REGA) ,within the framework of the sale and development of off-plan real estate projects. The scope of work included following up on engineering works, reviewing approved plans, and supervising implementation in accordance with approved specifications and standards.

The project is located in Laheq Island - Umloj ,Tabouk Province, and comprises **different types of villas, residential units, Souq and other entertainment facilities on the island** .Supervision services were carried out to ensure quality implementation, adherence to the schedule, safety requirements, and final delivery of the project.



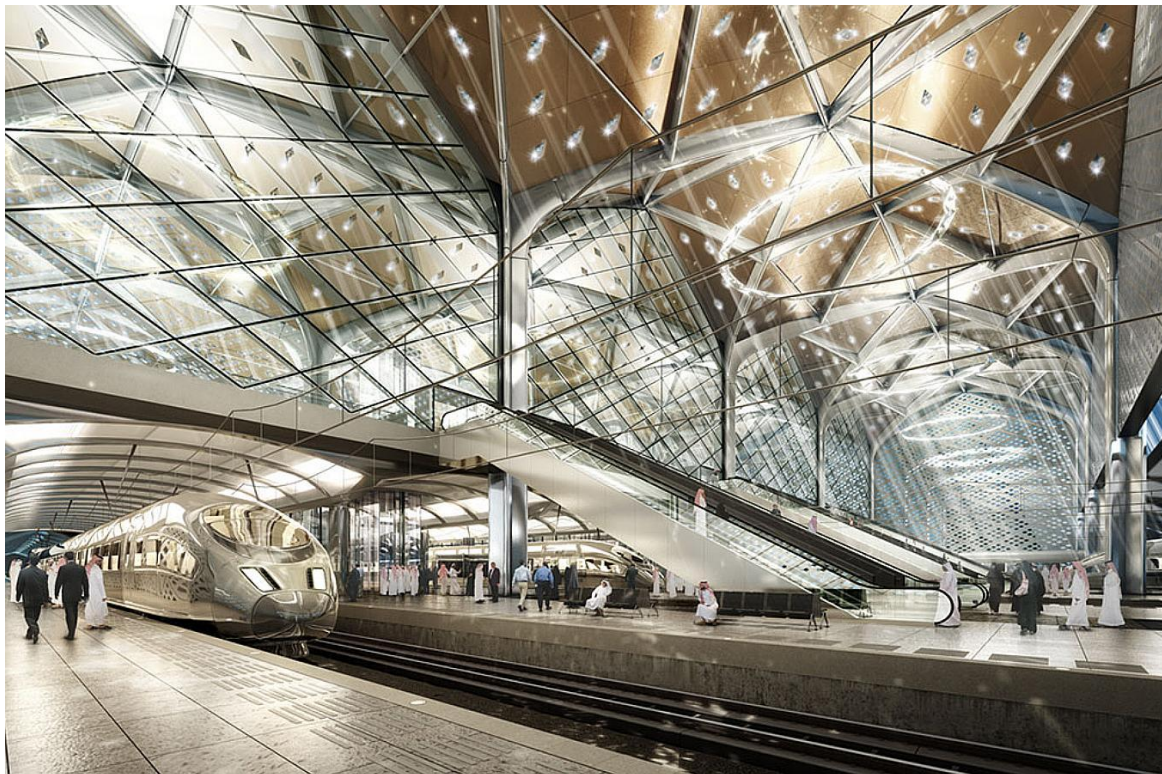
HBU Studies for SAR lands

Commercial & Development

Jeddah, Dammam & Al-Qurayat
HBU Studies – Urban Planning &
Surveying



Providing integrated consulting and development services in the fields of urban planning and real estate development, with a focus on master planning, land use strategies, and feasibility assessments. The scope includes preparing master plans and development concepts for residential, commercial, and mixed-use projects, conducting Highest and Best Use (HBU) studies to identify optimal land utilization and maximize investment value, and delivering market, financial, and technical feasibility studies to support informed decision-making. Services also include developing conceptual designs and development frameworks in alignment with regulatory requirements, coordinating with relevant stakeholders and authorities to ensure compliance and integration, and offering strategic advisory support for land development, asset optimization, and project positioning, supported by the preparation of professional reports and presentations for clients and investors.



The Node

Logistics & Infrastructure

Riyadh
Engineering Studies & Surveying

MEFIC THE NODE
CAPITAL RYADH

The company provides comprehensive engineering and technical consultancy services for the preparation and submission of engineering and technical reports related to the study of undeveloped land under infrastructure development. This includes verification of land area and boundaries, technical review and auditing of executed works on site, and continuous monitoring of contractors' performance and compliance with approved drawings and project requirements. The services also include the review and approval of design and construction drawings, approval of materials and technical submittals, and review of project schedules to ensure alignment with contractual milestones and execution plans. In addition, the company assesses the efficiency and suitability of contractors, equipment, and machinery deployed on site, and monitors construction progress and work quality to identify any technical deviations. The company further undertakes the study, comparison, and technical evaluation of contractors bidding for the project in accordance with the owner's requirements and project specifications, and provides the necessary recommendations and approvals to ensure optimal technical, quality, and executional outcomes for the project.



Value Engineering, Quality Enhancement & Standardization of the materials Specifications Research & Standards

Riyadh

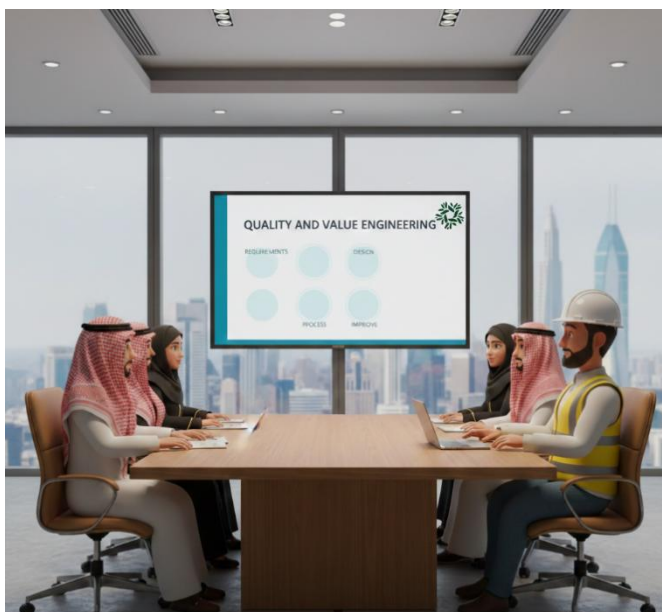
R&D -Sustainability advancement
- Quality Enhancement – Value Engineering



The company provides comprehensive engineering and consultancy services across the construction and real estate development sectors. Its scope of work includes technical design support, material and specification standardization, value engineering, and quality control to ensure projects are delivered efficiently, economically, and in compliance with applicable standards.

The company's services cover architectural, civil, mechanical, and electrical disciplines, including the development of technical specifications, material coding systems, and construction guidelines aligned with national and international codes and standards. The company also supports project stakeholders through technical advisory, documentation, and implementation frameworks to enhance project performance, sustainability, and cost optimization.

With a strong focus on innovation and best practices, the company aims to improve construction quality, streamline procurement processes, and deliver long-term value for clients in both public and private sector projects.



Billboards & Advertising Screens

Commercial

Riyadh
Design – Design Review &
Supervision

شركة ريمات
الرياض للتنمية
Remat Al-Riyadh



العربية
al arabia

The company provides specialized engineering consultancy services for the design, review, and supervision of advertising billboards and digital screens. This includes the preparation of structural design solutions for static and digital advertising structures, the review and verification of submitted designs to ensure compliance with applicable technical standards, safety requirements, and local regulations, and the provision of technical recommendations for optimization and risk mitigation. The scope of services further includes on-site supervision of installation and execution works to ensure that construction activities are carried out in accordance with approved designs, specifications, and quality standards. In addition, the company undertakes coordination with relevant governmental authorities to obtain all necessary permits and approvals for the commencement of works, including the preparation and submission of technical documentation and drawings required for licensing processes. The company also provides technical support during implementation, conducts inspections, and issues professional reports and certifications related to design compliance and execution quality.



CUBIC

Commercial & Self Storage

Riyadh
Technical Support & Supervision



We provide full technical supervision services for the execution of a commercial self-storage building. Our scope of work includes the preparation, review, and management of supervision documents, continuous monitoring of the contractor's activities, and providing technical recommendations and professional advice to the Owner. We review and approve shop drawings, review and certify As-Built drawings, and ensure that all works are carried out in accordance with approved designs, specifications, and applicable standards. We also review and approve technical submittals for materials and subcontractors, and propose practical value-engineering solutions that achieve time and cost efficiency while maintaining the required quality and project objectives.



Daniat Al-Fursan

Housing Community

Riyadh

PMC - Technical office -
Engineering supervision



The company provided engineering supervision and project management services for Daniat Al-Fursan project in accordance with the requirements of the National Housing Company (NHC) and the regulations of the Real Estate General Authority (REGA), within the framework of the sale and development of off-plan real estate projects. The scope of work included following up on engineering works, reviewing approved plans, and supervising implementation in accordance with approved specifications and standards.

The project is located in Riyadh, Riyadh Province, and comprises **1,936 residential units** of the **apartment** type. Supervision services were carried out to ensure quality implementation, adherence to the schedule, safety requirements, and final delivery of the project.



Commercial Centers

Study & supervision project

Multiple Locations - KSA
Supervision – Studies & Technical
Services



The company delivered engineering & construction supervision services for seven shopping mall projects, including **Al Khafji Mall, Al Jouf Mall, Al Zulfi Mall, Tabuk Mall, Hafar Al-Batin Plaza, Aldaeadmi Mall and Almakan Mall.**

The scope covered the comprehensive study of design drawings, project budgets, and execution contracts, as well as on-site supervision and the preparation of the final completion report and certificate. The services were carried out in line with the owner's requirements to ensure proper project delivery and quality assurance across all stages.



Malham – Salboukh – AlQorinah Highway Roads & Bridges

Riyadh

Technical & Engineering Studies
and Designs



وزارة النقل والخدمات اللوجستية
Ministry of Transport and Logistic Services

The company prepared preliminary studies and designs for the **12 km dual carriageway project between Malham and Salboukh** and the **16 km dual carriageway project between Malham and Al-Quraina** in the Riyadh region, in accordance with the requirements of the **Ministry of Transport and Logistics Services**. The scope of work included the preparation of technical studies and integrated engineering designs for the duplication works.

The project includes the preparation of traffic, hydrological, and geological studies, engineering planning for intersections, design of main roads and service roads, design of bridges and ferries, traffic safety works, in addition to the preparation of executive plans and quantity schedules, to meet the safety and operational efficiency requirements of the road.



Sedra 2 - Roshn

Housing Community

Riyadh
Design Review & AOR



The company provides engineering consultancy services for design review and acts as the Architect of Record (AOR) for the Sedra 2 – ROSHN project. The scope includes the comprehensive review and verification of architectural, structural, and infrastructure design packages to ensure compliance with applicable codes, regulations, and the project's approved technical standards. The services also cover the coordination and integration of design inputs among all relevant disciplines, and the preparation, review, and official submission of drawings to the competent authorities.

In its role as AOR, the company is responsible for liaising and coordinating with all governmental and regulatory bodies, including the municipality and the General Authority of Civil Aviation, to obtain the required approvals and permits for the project. This includes responding to authority comments, revising and resubmitting drawings as necessary, and ensuring that all approved documents meet statutory requirements. We continue to support the project with ongoing technical coordination, design clarifications, and compliance verification throughout the approval process to ensure timely and effective authorization.



Development Housing Programme

Housing Community

35+ locations across the Kingdom
Design - Design Review -
Supervision – Value Engineering



The company implemented the Developmental Housing Programme - Waves 2,3,5,6 & 7 project in accordance with the requirements of the National Housing Company (NHC) through a turnkey design-and-construction contract for the construction of single-storey residential, duplex, and shared villas within housing projects.

The project was implemented in more than **35 locations** distributed across various regions of the Kingdom, and included the preparation of all architectural, structural, mechanical and electrical designs, and the complete execution of the works until the final delivery of the project.



Daniat Al-Mashriqia

Housing Community

Riyadh

PMC - Technical office -
Engineering supervision



The company provided engineering supervision and project management services for Daniat Al-Mashriqia project in accordance with the requirements of the National Housing Company (NHC) and the regulations of the Real Estate General Authority (REGA), within the framework of the sale and development of off-plan real estate projects. The scope of work included following up on engineering works, reviewing approved plans, and supervising implementation in accordance with approved specifications and standards.

The project is located in Riyadh, Riyadh Province, and comprises **1,722 residential units** of the **apartment** type. Supervision services were carried out to ensure quality implementation, adherence to the schedule, safety requirements, and final delivery of the project.



Awali Alfursan

Housing Community

Riyadh

Design - Technical office



A mixed-use residential G+ 4 building design in Awali Al Fursan project to be constructed for NHC . This project contains 23 residential building of 6 building types and some commercial buildings in between the residential buildings on 5 clusters. The project have a total of 528 apartments with an average area ranging from 52 to 172 square meter with a total surface parking of 534 cars .

The development covers a total Built-Up Area (BUA) of 83,536 square meters and 41,863 square meter plot.

The scope of work includes the preparation and submission of Detailed Design , Issuing Building permit, IFC drawings



King Abdulaziz Camel Village

Entertainment

Riyadh

Design - Technical Support -
Engineering supervision



The company provides engineering consultancy services for the design and supervision of a King Abdulaziz Camel Village, including the preparation of architectural, structural, mechanical, electrical, and site development drawings for all facilities and the overall master site layout. The scope includes site supervision and monitoring of contractors' works to ensure compliance with approved designs, technical specifications, and quality standards. The services also cover coordination and follow-up with contractors and all relevant authorities and stakeholders related to the project, ensuring proper execution and timely delivery in accordance with project requirements.



Daniat Al-Ghoroub

Housing Community

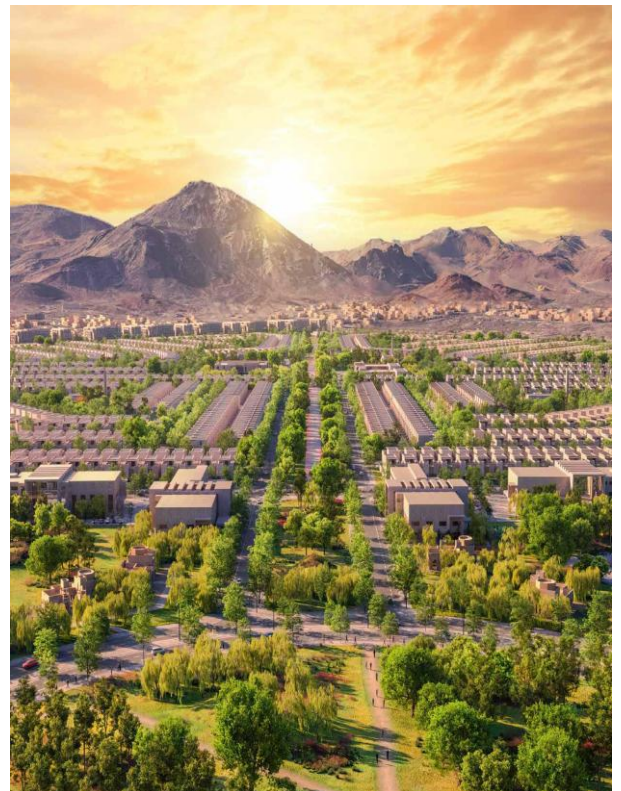
Madina

PMC - Technical office -
Engineering supervision



The company provided engineering supervision and project management services for Daniat Al-Ghoroub project in accordance with the requirements of the National Housing Company (NHC) and the regulations of the Real Estate General Authority (REGA), within the framework of the sale and development of off-plan real estate projects. The scope of work included following up on engineering works, reviewing approved plans, and supervising implementation in accordance with approved specifications and standards.

The project is located in Madina, Madina Province, and comprises **1,606 residential units** of the **apartment** type. Supervision services were carried out to ensure quality implementation, adherence to the schedule, safety requirements, and final delivery of the project.



Oboor Rehabilitation Center

Commercial

Riyadh

Design

شركة تنمية الإنسان
HUMAN DEVELOPMENT CO.



The company provides engineering consultancy services for the design of a Rehabilitation and Care Center, including the preparation of all architectural, structural, mechanical, electrical, and site development drawings in compliance with applicable codes and regulations. The scope also includes coordination with the relevant governmental and municipal authorities to obtain all required permits and approvals, and ensuring that all approved documents are ready for implementation in accordance with project requirements.



Rihab Al-Wajha

Housing Community

Dammam

PMC - Technical office -
Engineering supervision



The company provided engineering supervision and project management services for Rehab Al-Wajh project in accordance with the requirements of the National Housing Company (NHC) and the regulations of the Real Estate General Authority (REGA) ,within the framework of the sale and development of off-plan real estate projects. The scope of work included following up on engineering works, reviewing approved plans, and supervising implementation in accordance with approved specifications and standards.

The project is located in Dammam, Eastern Province, and comprises **1,092 residential units** of the **apartment** type. Supervision services were carried out to ensure quality implementation, adherence to the schedule, safety requirements, and final delivery of the project.



Rihab Al-Sadan

Housing Community

Jeddah

PMC - Technical office -
Engineering supervision



The company provided engineering supervision and project management services for Rehab Al-Sadan project in accordance with the requirements of the National Housing Company (NHC) and the regulations of the Real Estate General Authority (REGA) ,within the framework of the sale and development of off-plan real estate projects. The scope of work included following up on engineering works, reviewing approved plans, and supervising implementation in accordance with approved specifications and standards.

The project is located in Jeddah ,Makkah Province, and comprises **1,400 residential units** of the **apartment** type. Supervision services were carried out to ensure quality implementation, adherence to the schedule, safety requirements, and final delivery of the project.



Tahakom Administration Buildings Offices

Taif & Umluj

Design – Technical & Engineering
Studies - Engineering supervision



The company provided soil studies, topographic surveys, and design concept development for the administrative buildings and maintenance workshops of Tahakom Company in Taif and Umluj. The scope of work included providing complete architectural, structural, and mechanical design packages, fire suppression and alarm systems, and infrastructure, in addition to obtaining the necessary permits and coordinating with relevant authorities.

The company also prepared bills of quantities and technical specifications for the project, as well as tender documents and the contractor evaluation and selection process.



Morjanah

Housing Community

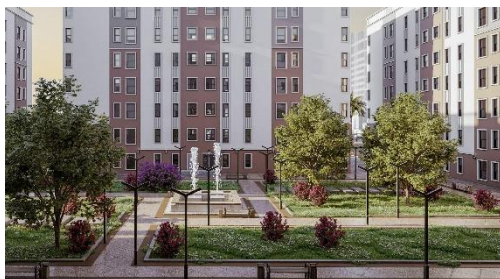
Jeddah

PMC - Technical office -
Engineering supervision



The company provided engineering supervision and project management services for Morjanah project in accordance with the requirements of the National Housing Company (NHC) and the regulations of the Real Estate General Authority (REGA) ,within the framework of the sale and development of off-plan real estate projects. The scope of work included following up on engineering works, reviewing approved plans, and supervising implementation in accordance with approved specifications and standards.

The project is located in Jeddah ,Makkah Province, and comprises **1,500 residential units** of the **apartment** type .



Dar Khozam

Housing Community

Riyadh

Design – Technical Support



The company provided full design packages for Dar Khozam - Riyadh project in accordance with the owner's requirements and within the framework of the Wafi programme (off-plan sales). The scope of work included designing the residential buildings and monitoring the progress of work with stakeholders and government authorities to ensure compliance with the approved specifications and standards.

The project is located in Riyadh and consists of multi-storey residential buildings comprising **270 apartment units**.



Venan

Housing Community

Jeddah

Supervision – Technical Support



The company provided engineering supervision services for the Venan - Jeddah project in accordance with the owner's requirements and within the framework of the Wafi programme (off-plan sales). The scope of work included supervising the implementation of engineering works, reviewing the implementation plans, and monitoring the progress of work to ensure compliance with the approved specifications and standards.

The project is located in Jeddah and consists of multi-storey residential buildings comprising **2,023 apartment units** to ensure quality implementation, adherence to the schedule, safety requirements, and final delivery of the project.



Jawhrat Alrasifah

Housing Community

Makkah

Supervision – Technical Support



The company provided engineering supervision services for the Jaeharat ALrasifah - Makkah project in accordance with the owner's requirements and within the framework of the Wafi programme (off-plan sales). The scope of work included supervising the implementation of engineering works, reviewing the implementation plans, and monitoring the progress of work to ensure compliance with the approved specifications and standards.

The project is located in Makkah and consists of multi-storey residential buildings comprising **1,035 apartment units** tuo deirrac erew secivres noisivrepus .to ensure quality implementation, adherence to the schedule, safety requirements, and final delivery of the project.



Flood and Rainwater Mitigation Infrastructure

Riyadh

Supervision – Technical Support



The company provided direct supervision services for flood prevention and rainwater drainage projects (first scope), in accordance with the requirements of the Ministry of Municipal and Housing (MOMAH) - Riyadh Region Municipality.

The scope of work included supervising the implementation of works, following up with contractors, reviewing time schedules, and monitoring project progress and quality to ensure compliance with approved plans and specifications.

The projects covered several sites in the municipalities of Hotat Sudair, Tamir, and Shaqra in the Riyadh region. Supervision services were carried out to ensure quality implementation, adherence to the schedule, safety requirements, and final delivery of the project.



Assessment & Transfer of Fire & Cooling Network Infrastructure

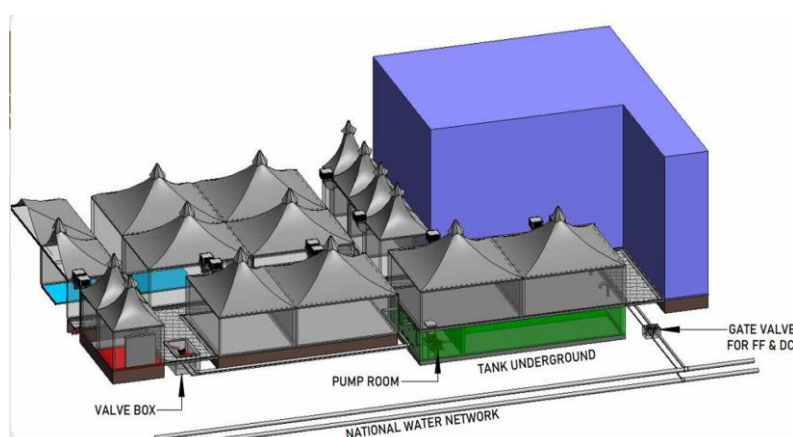
Makkah

Technical and operational assessment of assets & infrastructure



The company provided technical and operational assessment services for infrastructure assets, in line with the owner's requirements. The scope of work included inventorying and assessing the condition of assets related to fire and air conditioning networks, and preparing the technical and operational reports necessary to support transfer and operation.

The project was implemented in the holy sites of Makkah, including the locations of Arafat, Mina, and Muzdalifah, contributing to improving asset management efficiency, ensuring operational readiness, and complying with safety and service continuity requirements.

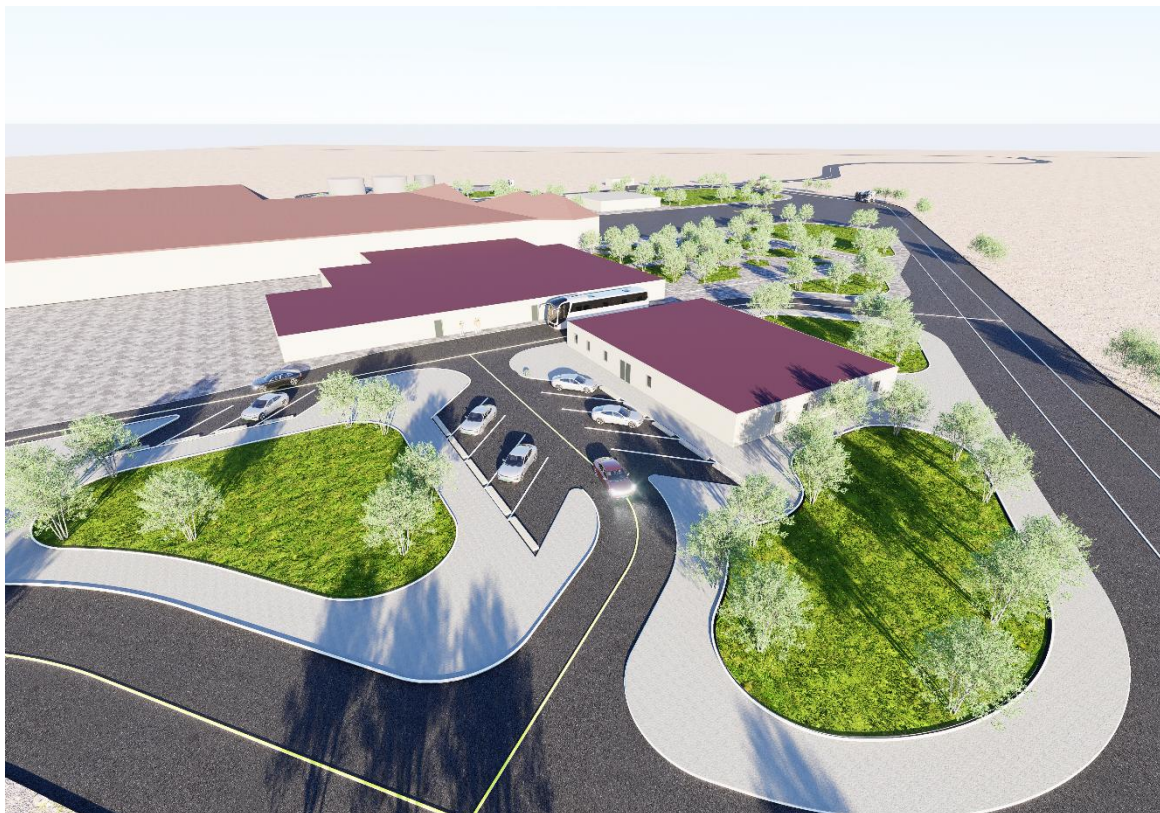


Haradh Slaughterhouse Infrastructure

Riyadh
Design & Technical Support



We provide engineering design services for all infrastructure, landscaping, and planting works of the Nadec slaughterhouse project. Our scope includes the design of road networks, drainage, water and wastewater systems, irrigation networks, and utility corridors, in addition to hardscape and softscape works. We ensure that all designs comply with applicable standards while delivering practical and cost-effective solutions that enhance project functionality and sustainability.



Equestrian Track & Horse Stables Infrastructure

Riyadh
Design - Technical Support –
Urban Planning – Engineering
Studies



NHC



وزارة البلديات والإسكان
Ministry of Municipalities and Housing



نادي سباقات الخيل
JOCKEY CLUB OF SAUDI ARABIA

We provide comprehensive engineering consultancy and design services for equestrian facilities and related developments. In collaboration with STRI, we deliver the full range of consultancy services for the design of equestrian training tracks within Al-Janadriyah Stable Master Plan, covering concept and detailed design, design development, and the preparation of drawings, bills of quantities, technical specifications, and tender documents.

In partnership with the NHC and the Jockey Club of Saudi Arabia, we also provide integrated consultancy services for the design of model stable projects in Riyadh, including urban and master planning studies, infrastructure network design, architectural and site planning, and complete tender documentation. All deliverables are developed in compliance with applicable standards, ensuring practical, efficient, and sustainable solutions for equestrian facilities.



NOTED CLIENTS



البحر الأحمر الدولية
Red Sea Global



NHC



الرياض



كدانة
KIDANA



تحكم
TAHAKOM



شركة ريمات
الرياض للتنمية
Remat Al-Riyadh



المسار الرياضي
Sports Boulevard



مجموعة روشن
ROSHN GROUP

وزارة البلديات والإسكان
Ministry of Municipalities and Housing



وزارة النقل والخدمات اللوجستية
Ministry of Transport and Logistic Services



NCGR

المركز الوطني لنظم
الموارد الحكومية



شركة المياه الوطنية
National Water Company

SAR

الخطوط الحديدية السعودية
SAUDI ARABIA RAILWAYS



هيئة تطوير محمية الإمام
تركي بن عبدالله الملكية
IMAM TURKI BIN ABDULLAH ROYAL NATURE
RESERVE DEVELOPMENT AUTHORITY



نادي سباقات الخيل
JOCKEY CLUB OF SAUDI ARABIA

جود
الإسكان

TBC





